

THE WEEKLY



Issue 34, 1 December 2017

Inside this issue

- * From the Head of Learning & Teaching
- * PE & Sport
- * SPW OSHC Holiday Program
- * School Magazine 2017
- * SPW Scholarship for St John's Grammar, Belair, Year 8 2019
- * The Arts
- * PFA News
- * Chaplain's Chat
- * The Week Ahead

From the Head of Learning & Teaching

As a community you can all be very proud of our Year 5 students who last night demonstrated a great depth of learning at the conclusion of their PYP journey through the PYP Exhibition.

While the weather put on an amazing show, the Year 5s held centre stage in the Chapel. In small groups students proudly shared what they have been working towards independently for the last 7 weeks.

Thank you to families who have been a vital part of this journey. Thank you also to our wonderful school community who got behind students by working as mentors, meeting weekly to question and challenge groups, ensuring they remain on track. Our Year 5 teaching team, from class rooms to specialist lessons, need to be recognised for the calm manner in which they presented this opportunity, and the confidence they instilled in our learners.

Thank you for playing an important role in developing the citizens of our future.

Amanda Kelly

PE & Sport

HERE ARE OUR 'SPORTS SHORTS' FOR THIS WEEK

- * Good luck to the following children who will be competing in the Pan Pacific Games next week: Lily T (Track and Field); Maggie F, Jade C, Ashlee M, Airlie R, Kate L (Touch Football); Matthew C (Swimming); Ava B (Soccer); Abby F (Netball) and Nathan R (Hockey). About 4,000 very talented children from 15 countries will be competing.
- * Congratulations to our Boys' Knockout Tennis team who were crowned State Champions this week. Each match, two doubles and four singles, was of a very high standard and the result came down to the wire – three sets SPW, three sets Fulham North; it was then decided on games 23 to 21. Well done Edward W, Will C, Daniel F and Hugh W.
- * The Milo in-2-cricket packs are on their way and will be delivered before the end of the year to those families who registered their child. These will provide lots of fun for our enthusiastic cricketers in the holidays.
- * Term 4 After School Sports practices and matches will finish next week (4 to 9 December). There will be no sports sessions in Week 9.

Have a nice weekend.

Stay calm and keep active.

Alastair Dow
Head of PE and Sport
adow@spw.sa.edu.au

Thought for the Week

"Kindness and compassion are among the principal things that make our lives meaningful."

Dalai Lama

[Facebook](#) [Twitter](#) [Email](#)



SPW OSHC Holiday Program

The December/January SPW OSHC Holiday Program is now available. For those already registered with the service bookings can be made through the My

Family Lounge app or the [Out of Hours Care page on the SPW website](#). New registrations will need to start at the website. Please refer to the program on page 6 of this newsletter.

In response to the recent survey feedback please note the Holiday Program operating hours have changed to 7.30am-6.00pm with a \$1.00 increase per day to partially offset the increased cost to the service.

School Magazine 2017

As the 2017 school year draws to a close, our staff have been busily preparing the School Magazine for 2017. We're excited to share this publication with our school community each year.

Each current family from ELC to Year 7 will receive one copy of the '2017 School Magazine' delivered to the oldest child in each family. For our Year 7 students who will be leaving us at the end of the year, we will send their copy home with a younger sibling. Alternatively if no younger siblings are remaining at SPW we will let families know when the magazines are available to collect from the Front Office.

Additional copies of the School Magazine 2017 are now available for purchase via Qkr! for \$30 each. We are expecting delivery of the School Magazine in the first two weeks of Term 1, 2018.

SPW Scholarship for St John's Grammar, Belair

FAMILIES OF STUDENTS CURRENTLY IN YEAR 6 AT SPW PLEASE NOTE

St John's Grammar School offers limited St Peter's Woodlands Scholarships entering into Year 8 in 2019, to students currently attending SPW who will be in Year 7 in 2018.

Students applying for a SPW Scholarship should be able to demonstrate enthusiasm, participation and exceptional commitment in a diverse range of activities, which may include:

- * Community involvement
- * Leadership
- * Extra-curricular involvement
- * Persistence in academic pursuits

A successful SPW Scholarship student will be expected to:

- * Be a role model to other students
- * Be a team player in all pursuits
- * Contribute to School life and inspire others

Information on the SPW Scholarship, along with a fact sheet which outlines the criteria, and the application form, [is available on the St John's Grammar School website](#).

Should any families wish to discuss the Scholarship opportunity further, please contact Tim Wilson, Registrar & Public Relations, on 8278 0210 or [via email](#).

The Arts

JUNIOR GLEE, SHOW CHOIR & SPW BAND

- * During Week 8 Extra-Curricular Arts Sessions Monday 4 - Wednesday 6 December will be rehearsals for the Community Carols Concert: Please note that if Junior Glee, Show Choir, or SPW Band members are not participating in this concert, they do not need to attend the Week 8 rehearsal but are welcome to attend if they would like.
- * All Week 9 Sessions are cancelled: there are no Extra-Curricular Arts activities Week 9.

MUSIC RESULTS

Congratulations to the following students on their Music results:

AMEB EXAMS

Ava B	Flute Third Grade	A+	High Distinction
Imogen O	Flute First Grade	A	Honours
Daniel F	Flute First Grade	A+	High Distinction
Sienna B	Flute First Grade	A	Honours

CITY OF ADELAIDE EISTEDDFOD

Sienna B	3 rd Prize 10 Years and Under Flute Solo
	2 nd Prize 10 Years and Under Folktune

AMEB EXAMS

Louis D	Tuba First Grade	A	Honours
Elsie S	Trumpet First Grade	A	Honours
Allegra P	Trumpet First Grade	A+	High Distinction

Mark DeLaine
Head of the Arts



PFA News

FOUNDATION TO YEAR 7 SCHOOL CHRISTMAS LUNCH – [FRIDAY 8 DECEMBER](#)
ELC CHRISTMAS BRUNCH - [TUESDAY 12 DECEMBER](#)

Notes have been sent home with your child outlining what to bring along for this year's Christmas Lunch. You may have noticed that this year we have asked for some students to bring along non-perishable food items which will be donated to the Anglicare Christmas Appeal. In previous years we have had to throw out excessive amounts of food at the end of the Christmas Lunches. In an effort to minimize wastage, we would like you to support this initiative and encourage your child to understand the importance of this. We are looking forward to celebrating the end of the year at these events and know they will be thoroughly enjoyed by all. For more information about the lunch/brunch [click here](#).



Chaplain's Chat

CHAPEL

Warm thanks to Mrs Simmonds who helped us mark the start of Advent with a talk about the meaning of Advent and Advent calendars. Next week we will enjoy the Foundation students' nativity play entitled *Christmas Counts, a Nativity You Can Count on* by Matthew Newman.

ANGLICARESA CHRISTMAS HAMPER APPEAL

There are just two weeks left to place donations of non-perishable foods under the Christmas tree in the Chapel in our annual Christmas Hamper Appeal. AnglicareSA will welcome any contributions to go into the 1,000 hampers they plan to give to families who are "doing it tough" this Christmas. The AnglicareSA Hopemobile will arrive to collect our donations after the final Christmas Communion Service on Wednesday 13 December in Week 9. For more information, [please click here](#).

COMBINED CAROL SERVICE WITH ST PETER'S GLENELG

On Sunday 10 December at 5.00pm in St Peter's Glenelg Church, the Chapel Choir and Band will present the Christmas play *Away in a Manger* by the well-known British writer, Niki Davies. This will form part of the annual combined School and Parish Carol Service. Everyone is very welcome to attend. For more information, see the poster in this edition of *The Weekly* or speak to the Chaplain.

Rev'd Julia Denny-Dimitriou

**AnglicareSA
Christmas Appeal**

This Christmas, AnglicareSA aims to hand out over 1,000 food hampers to support families, adults and individuals who have no-one else to turn to.

Can you assist in providing any Christmas hamper items?

Your donations can be placed under / around our Christmas tree located in the Chapel. The Hope Mobile will collect donations after the final Communion Service on Wednesday 13 December.

Thank you, in advance, for your generous support.

ANGLICARE
HELP TO HELP SA
ANGICARE
Central Office
127 Peel Street
MELBOURNE VIC 3000
P. 051 430 1234 F. 051 430 1234
www.anglicare.org.au

SPW
EARLY LEARNING AND
PRIMARY EDUCATION

Christmas Hamper Items

Non-perishable foods such as:

- * Tinned ham and tuna
- * Canned potatoes
- * Canned vegetables
- * Cereals, Weetbix, Cornflakes, Rice Bubbles etc
- * Canned fruit
- * Coffee, tea, Milo
- * Long life full cream milk and cream
- * Spreads, Vegemite, peanut butter, jams etc
- * Pasta and simmer sauces
- * Toiletry items
- * Christmas cakes, fruit mince pies
- * Christmas treats and snacks

SPW Christmas Community Service

In partnership with St Peter's Anglican Church, Torrens Square, Augusta Street, Glenelg

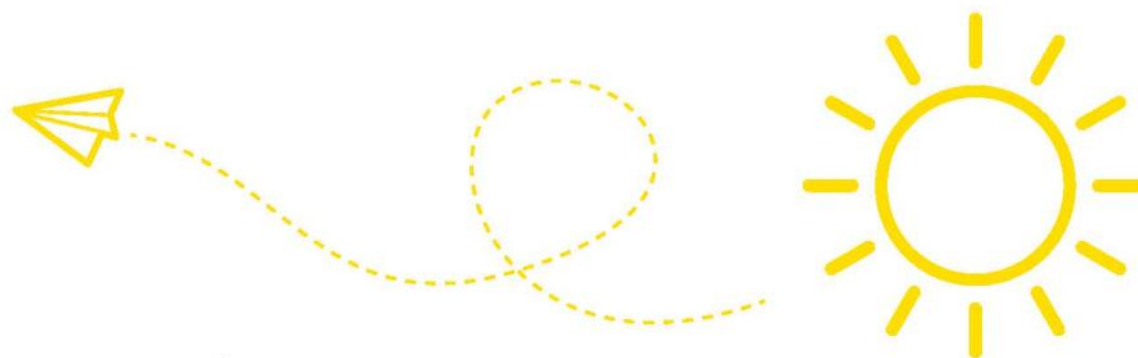
Sunday 10 December, 5.00pm

Celebrating the Christmas Story with music, drama, story and song. Featuring the Church organ, St Peter's Parish Choir, SPW Choirs, and the Musical Nativity "Away in a Manger"



OSHC HOLIDAY PROGRAM

Summer 2017/18



December

THURS 14	Glenelg Playground	Local walk to Moseley Square Playground.	Tier: 1
FRI 15	Cooking up a storm	Cooking and baking experiences.	Tier: 1
MON 18	Zen Garden Making	Make your own Zen garden to take home.	Tier: 1
TUES 19	*Adelaide Oval Excursion	Excursion to Adelaide Oval.	Tier: 3
WED 20	Science Day	Mr Kleinig returns to put on a science show.	Tier: 2
THURS 21	Christmas Around the World	Explore how different countries celebrate the end of year holidays.	Tier: 1
FRI 22	Holiday Movies	Students vote for holiday movies.	Tier: 1

Fees

All activities are assigned to one of the following fee structure tiers.

Tier 1 \$55	Tier 2 \$63	Tier 3 \$71	Tier 4 \$76
-------------	-------------	-------------	-------------

Holiday Program Details

Hours: 7:30am - 6:00pm

Location: SPW Library Seminar Room

*Excursions: Arrive by 9:00am. Returning by 3:30pm

What to bring

• Hat • Appropriate Footwear • 'Healthy choices' lunch (no nut products)
Morning & Afternoon tea will be provided

Book online now at spw.sa.edu.au

Limited spaces available so get in early to ensure your booking.

January

MON 15	Makers Delight	Mr. Bilney and Ms. Kelly to run a 2-day Design Technology workshop onsite.	Tier: 2
TUES 16		Attend one or two days.	
WED 17	*Zoo Excursion	Walk with the animals at the Adelaide Zoo.	Tier: 3
THURS 18	Mini Olympics	Events from all aspects of sport to test ourselves.	Tier: 1
FRI 19	Tacticians	Team based games to test the mind and collaboration skills.	Tier: 1
MON 22	Master Chef Competition	Work against the clock to prepare a surprise meal for our judges.	Tier: 2
TUES 23	*City Excursion	Visit the museum, lunch in the Botanical Gardens and explore the Adel Central Markets.	Tier: 2
WED 24	Robotics	Have fun with our new OSHC Robots.	Tier: 1
THURS 25	Water Day	Slip and slide with our giant bouncy water slide and water games. Bring bathers, a towel and a change of clothes or two.	Tier: 3
FRI 26	Public Holiday	Australia Day Closure	
MON 29	Emergency Services Visit	Come enjoy a surprise!	Tier: 1



The Week Ahead



2017 Term 4 Week 8

Monday 4— Friday 8 December

Contact Us

	Monday	Tuesday	Wednesday	Thursday	Friday
Uniform Shop	◇ 1.30pm-4.00pm	◇ 1.30pm-4.00pm	◇ 8.00am-9.30am	◇ 8.00am-9.00am ◇ 1.30pm-4.00pm	◇ 1.30pm-4.00pm
School	<ul style="list-style-type: none"> * 2018 Year 7 Camp Information Session, 6.30pm (Chapel) 	<ul style="list-style-type: none"> * Year 4 Uol Action Bake Sale, 12 noon (Year 4 classrooms) * Assembly, Whole School, 2.30pm 	<ul style="list-style-type: none"> * Foundation Nativity Rehearsal, (ELC & Y3-5 as audience) 8.40am (Chapel) * Year 6 Surf Safety, 10.00am (GSLC) 	<ul style="list-style-type: none"> * Chapel - Foundation Nativity Performance, 8.40am (Year 1-2, Year 6-7 audience) * Year 6 Surf Safety, 10.30am (GSLC) * Year 3 Uol Excursion, 12.30pm (Montezuma's) 	<ul style="list-style-type: none"> * Coffee Club, 8.15am—9.00am (near Cudmore Building) * PFA Christmas Lunch, F-7, 12 noon (Baddams / Nutter Thomas) <hr/> <p>SATURDAY</p> <ul style="list-style-type: none"> * Foundation 2018 Transition Morning, 9.00-11.30am <hr/> <p>SUNDAY</p> <ul style="list-style-type: none"> * SPW Community Carol Service, 5.00pm (St Peter's Glenelg)
Extra & Co Curricular	<ul style="list-style-type: none"> * Show Choir (3-7) - 8.00am-8.40am (Music Centre) * MP Sport, 3.20pm 	<ul style="list-style-type: none"> * SPW Band, 8.00am-8.40am (Music Centre) * JP Sport, 3.20pm 	<ul style="list-style-type: none"> * Junior Glee (F-2) 8.00am-8.30am (Music Centre) * Run Club, 8.15am-8.40am 	<ul style="list-style-type: none"> * Chapel Choir & Chapel Band, 8.00am-8.30am (Chapel) * UP Sport - 3.20pm 	* Beach Run , 8.00am-8.30am
PFA	PFA BBQ/Sausage Sizzle , after school				

Front Office
8295 4317
administration@spw.sa.edu.au

Student Absentees
7221 6221
[Or via Skoolbag App](#)

Early Learning Centre
8295 4317 Extension #4
elc@spw.sa.edu.au

OSHC
8295 4317 Extension #5
oshc@spw.sa.edu.au

Finance Office
7221 6229
finance@spw.sa.edu.au

Website
spw.sa.edu.au

St Peter's Woodlands is an IB World School accredited in the International Baccalaureate Primary Years Program (PYP)

St Peter's Woodlands Grammar School Inc
39 Partridge Street Glenelg SA 5045
A Co-educational Anglican Primary School

