

Prospectus

Welcome to St Peter's Woodlands



**St Peter's
Woodlands**

The difference is extraordinary.

Wonder Courage Respect



Our vision is to nurture our students to be happy, creative and educated young people who care for others and make a positive difference in the world.

A Lifetime of Learning

The Difference is Extraordinary

We are relentless in seeking the remarkable in every child.

Education at St Peter's Woodlands is a rare and inspirational experience dedicated to children aged two to twelve years old.

Since 1999 we have been championing early years and primary education, providing an inclusive and nurturing learning experience. St Peter's Woodlands is a community where young, inquisitive minds are encouraged to grow and children can thrive in a faith-based environment dedicated to their individual educational needs. St Peter's Woodlands is an Anglican school underpinned by the teachings of a progressive Christian church.



Embedding our core values of Wonder, Courage and Respect throughout life at St Peter's Woodlands equips our children with the foundations they need to thrive when facing an unpredictable tomorrow.

We understand that choosing the right primary school for your child is one of life's most important investments. We invite you to discover why St Peter's Woodlands is the best choice for your child, now and into the future.



Principal's Welcome

Welcome

Although we cannot predict the future, we can prepare our children for it.

Welcome to St Peter's Woodlands Grammar School where we passionately believe in the effectiveness of quality early years and primary education to prepare students for lifelong learning. Through truly knowing and appreciating the uniqueness of each child in our care, we aim to instil a sense of joy, wonder, curiosity and purpose in each one of them.

St Peter's Woodlands has a strong sense of community. We firmly believe in the saying, "It takes a village to raise a child," and endeavour to form genuine partnerships with our parents and caregivers. With plenty of opportunities to gather, lifelong bonds are formed, not only between our children but between our adult community too.

Every child is unique with their own learning journey ahead of them. Forming positive relationships with educators and staff will help them to connect and find their place within our community.



The staff at St Peter's Woodlands are a group of passionate, caring and dedicated professionals committed to seeing children thrive, giving them the opportunities to develop their whole self, whilst discovering their spirituality, creativity and passions.

As children start their journey within our Early Learning Centre, teachers design stimulating, play-based academic experiences that develop children's critical thinking and curiosity, whilst developing a strong sense of belonging.

Transitioning into the Primary school, it's during the Junior Primary years we see children develop the foundational literacy and numeracy skills, supplemented by learning in areas such as sport, music, digital technology and art.

From Year 3 onwards children strengthen their academic skills, emotional well-being, social abilities, spiritual awareness and personal character. Building on our foundation of educational excellence, Primary children have access to a wide range of activities and experiences that will hold them in good stead for their eventual transition to Secondary schooling.

As an International Baccalaureate school, offering the IB Primary Years Program (PYP), children have opportunities to contextualise their learning through inquiry whilst solving real-world problems.

It is our goal that each student will go from strength to strength, developing courage and resilience, have a strong sense of self and feel valued so they can go on to shape their world into the future.

I look forward to meeting you soon. I warmly invite you to attend an upcoming School Tour to learn more about the extraordinary learning opportunities here at St Peter's Woodlands.



Helen Finlay,
Principal



Location and Facilities

Space to Grow and Thrive

A contemporary learning environment close to the sea, specifically designed with the needs of early learners in mind.

Located in beachside Glenelg, 20 minutes south-west of Adelaide's CBD, St Peter's Woodlands is a blend of rich history and outstanding modern facilities. This is a place where learning is an adventure and curiosity comes to life.

Set on over 3.5 acres, our facilities are designed specifically for early learners and primary aged children. The facilities and grounds at St Peter's Woodlands are exceptional.



Purpose Designed Learning Spaces

- Early Learning Centre
- Large Collaborative Classroom Spaces
- Library and Resource Centre
- Gymnasium
- Dance Studio
- Music Centre
- Art Rooms
- Multi-Media Studio
- Design and Technology Studio
- Coding Central – Tech Space
- Out of School Hours Care Centre with student kitchen
- The Hub Learning Centre

Extensive Outdoor Environments

- Outdoor Plaza
- Multiple Playgrounds
- Three large playing fields
- Outdoor Netball, Tennis, Volleyball and Basketball courts
- Nature Play space
- Cricket nets

Our History

A Rich History of Education

We have provided quality education to generations of South Australian children for more than 158 years.

The Day School of the Parish of St Peter's Glenelg was established in 1863 and catered to children in the Glenelg area for more than a century before it became St Peter's Glenelg Anglican Grammar School.

Following the closure of neighbouring Woodlands Church of England Girls Grammar School in 1998, St Peter's Glenelg acquired the historic Partridge Street site and moved the growing school community to the much larger campus, combining the history and traditions of both schools.



A New Future

In 1999, a visionary new school was formed. St Peter's Woodlands Grammar School opened its doors for the first time for Preschool to Year 7 students. In 2016, St Peter's Woodlands expanded the educational offering with the opening of the Early Learning Centre, catering for children from 2 years of age.

In 2019, St Peter's Woodlands celebrated a twenty-year milestone. With strong growth and reputation within the community, St Peter's Woodlands is a premier educational environment for young learners today and in to the future.







Early Learning Centre

A Place for Young, Inquisitive Minds

Helping our youngest students develop positive attitudes toward their education and to grasp foundational skills before they start school is a top priority.



The relationships and environments in which children participate during their early years have a significant impact on their development into the future. Our goal is to help build positive learning attitudes within our youngest children to help them become successful lifelong learners.

Many children start their learning journey at St Peter's Woodlands Early Learning Centre. We provide an exciting, playful and intentional program where children develop a sense of wonder and pride in their discoveries.

Our Early Learning Centre and Programs

The St Peter's Woodlands Early Learning Centre programs cater for children from 2 years of age through to the start of school. Each room has a qualified Early Childhood teacher, planning and delivering the curriculum, together with our passionate and experienced co-educators.

Our rooms seamlessly connect the indoor and outdoor spaces ensuring an abundance of natural light. Our facilities have been designed with a calming, natural aesthetic and are zoned to cater for the needs of young children.



The Early Learning programs access the facilities of the broader school including the nature play space, dance studio, library, Chapel and oval spaces. There is an abundance of learning environments to inspire curiosity and wonder for our children.

With a progressive curriculum, small group sizes and a flexible environment for families, St Peter's Woodlands provides peace of mind for parents, and purposeful learning experiences for children, building upon individual strengths, needs and emerging interests.

Making the Transition to Primary School

One of the wonderful benefits of being part of the St Peter's Woodlands Early Learning Centre is the smooth transition into the Primary school. Educators collaborate to share information and ensure children settle quickly into school life. Children participate in a structured Transition Program and have many other opportunities to visit the Reception classrooms in preparation for starting school.



Primary School

For the Love of Knowledge

St Peter's Woodlands supports children on their own learning journey through the delivery of a progressive curriculum.

Starting with Explicit Direct Instruction (EDI)

Our commitment to deliver exceptional teaching, with a strong focus on teaching literacy and numeracy skills through the delivery of EDI programs, enables children to set the foundations in their early years. By explicitly teaching literacy and numeracy skills, students have the tools at their disposal to help them learn how to conduct inquiry, communicate ideas, and to be problem solvers.



Inquiry-Based Learning

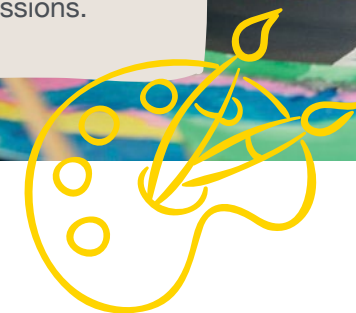
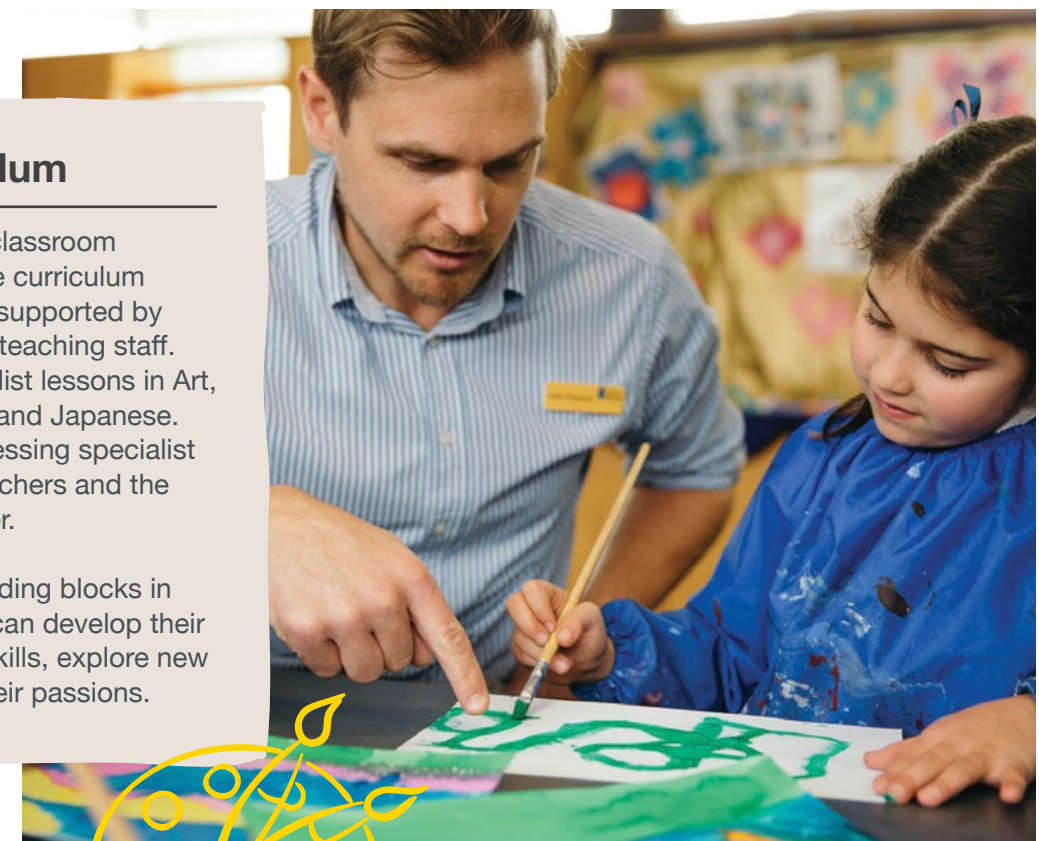
At St Peter's Woodlands we use an inquiry-based learning approach to help students take an active role in the learning process. As an International Baccalaureate World School, we access the IB Primary Years Program (IB PYP) curriculum framework to inform and frame our inquiry-based approach. The program helps students build their understanding through authentic and real world contexts.



Specialist Curriculum

Together with exceptional classroom teachers, the delivery of the curriculum at St Peter's Woodlands is supported by a broad range of specialist teaching staff. Children experience specialist lessons in Art, Music, Physical Education and Japanese. They also benefit from accessing specialist Information Technology teachers and the Digital Technologies teacher.

With solid foundational building blocks in place, we believe children can develop their independence and social skills, explore new opportunities and follow their passions.





Outdoor Education Camps

At St Peter's Woodlands we offer a range of Outdoor Education opportunities for our children.

The Outdoor Education program is a wonderful opportunity for children to solve problems, participate in team building activities, experience communal living, develop personal organisation skills and responsibility; all of which supports building resilience and encourages personal growth.

Commencing in Year 2 with an overnight 'Camping Capers' sleepover, the program is delivered through a series of camp experiences held at various locations such as Hindmarsh Island, Douglas Scrub and Woodhouse Activity Centre. The camps are conducted by qualified external providers, in collaboration with St Peter's Woodlands staff.

The quality of experiences enjoyed by our children are second to none, with fond memories being formed, challenges accepted and resilience built.



Outdoor Education Programs

Outdoor Adventures

We offer a wide range of outdoor learning experiences which opens up a myriad of growth opportunities for children.



Nature Play

The benefits of children engaging in practical experiences beyond the walls of the classroom are numerous. The Nature Play spaces at St Peter's Woodlands allow children to build friendships whilst they develop critical problem solving skills and work together with others.

Extra- and Co-Curricular

Play, Discover, Learn

Providing a strong foundation whilst also developing self-confidence, self-esteem and an appreciation of total wellbeing.

The Extra- and Co-Curricular programs at St Peter's Woodlands are designed to support children develop critical lifelong skills. The breadth of opportunities available is extraordinary, as children are encouraged to try new things, further developing their intellectual, physical, social and emotional capacities.



Sport Program

The Extra-Curricular Sport program is delivered by specialist coaches and designed to help children develop team skills, cooperation and discipline. A wide range of activities are on offer including Dance, Gymnastics, Tennis, Taekwondo, Basketball, Cricket, Netball, Football, Volleyball, Teeball and Soccer. A weekly Run Club operates to help children develop their fitness.

Team sport plays a large part within the St Peter's Woodlands school community. Children can participate in year level sporting teams, district and state SAPSASA and knockout competitions. We also host Soccer, Netball and Volleyball Schools of Excellence programs which provide opportunities for children to learn skills from some of South Australia's most experienced coaches.

The Arts Program

There is a strong connection between participating in creativity pursuits and the positive effects on brain development and wellbeing. With that in mind, St Peter's Woodlands has a flourishing Extra-Curricular Arts program.

One-on-one instrumental and voice instruction is delivered by specialist tutors in our purpose-built Music Suite. Various musical groups are available including show choir, Chapel choir and band, Junior Glee and various ensembles.

A school musical is presented each year, with Junior and Senior Musicals on offer. All children are welcome to participate with a plethora of ways to get involved.

Academic Program

To build confidence, citizenship skills and extend children's critical thinking, St Peter's Woodlands offers a Co-Curricular Academic Program. Children can choose to participate in a range of activities including Tournament of Minds, Debating, Public Speaking, Oliphant Science, the Primary Maths Challenge, and the IPSHA Poetry Recital. We encourage all children to follow their interests and invest time developing their skills.





Digital Technologies

Pathways to Digital Literacy

In an era of evolving change, we believe it is important to develop children's digital literacies from an early age through playful, enjoyable and intentional digital experiences.

A focus on improving digital literacy supports children with the skills they need for greater participation in science, technology, engineering, the arts and mathematics (STEAM) as they progress on their educational journey.



Coding Central

St Peter's Woodlands is committed to creating opportunities for children to learn to code and interact with digital technologies, through both specialised and integrated programs.

Our students access Coding Central, a learning space with age appropriate digital resources, including robotics, electronic devices and software, designed to engage young learners. The Digital Technologies program is led by a specialist digital teacher who supports both teachers and students across the school from Reception to the end of Primary school.

Technology

Across the school the classroom spaces are resourced with iPads accessible from the Early Learning Centre. Within the Primary school laptops, Chrome Books and iPads are available. Children from Year 5 supply their own iPad to support with their learning. Each classroom has interactive whiteboards and wireless technology.

Student Agency

Learning to Lead

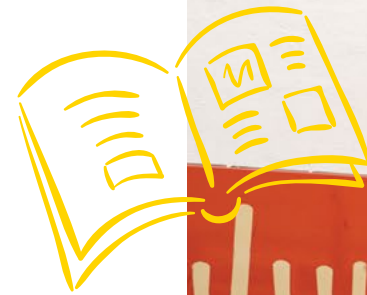
Throughout their time at St Peter's Woodlands all children are considered leaders and are given opportunities to develop their leadership skills.

Buddy Up

Across the Primary school children participate in Buddy Classes, where older students engage with younger children building quality relationships. This programs helps children develop a strong sense of belonging and connect with children of different ages.

Student Leadership

There are specific leadership programs from Year 5, where students are given the opportunity to represent their class, lead their House, or represent the school at external functions and events. Opportunities include engaging in Student Service Leadership Council, running for House Captains or School Captains.



Student Wellbeing

Character and Resilience



A learning environment that fosters wellbeing for students so they can flourish as future global citizens.

Rapid and complex changes within our society are impacting the wellbeing of children leading to health and mental wellbeing issues. In the 21st Century, learning is beyond just academic and vocational, therefore as a school we are compelled to create an environment that actively encompasses a whole-child wellbeing approach to education and encourages a passion for lifelong learning.

Wellbeing Programs

Woven throughout the school curriculum is a Positive Education approach, developed directly from the principles of Positive Psychology. The BounceBack Program is used in the Primary school and Kimochi Program in the Early Learning Centre. Other initiatives include Character Strengths programs, Buddy Class, Keeping Safe program, Seasons for Growth and lunchtime programs in The Hub. These programs provide children with a strong foundation of useful and practical skills on which they can draw from as they mature.

A Pastoral Care and Wellbeing support team comprising of the Principal, Heads of School, Chaplains, Head of Inclusive Education and the School Psychologist, work together with educators and families to identify how individual children can best be supported.

Evidence Based Programs

As educators and key role models in children's lives, we play an important role, in partnership with parents, to support and nurture the emotional, social and spiritual components of a child's development. At St Peter's Woodlands we enable students to succeed and flourish through evidence-based wellbeing practices and programs.





Inclusive Education

Supporting All Children to Thrive

We recognise and understand that children are diverse learners.



Inclusive Education

At St Peter's Woodlands we believe every student has the right to learn at a pace and level that supports their individual needs.

Our Inclusive Education team offer a range of support structures including small group intervention, individual intervention, psychological support and in-class support. The team caters for children who require additional help in literacy and numeracy, as well as catering for gifted students and children who require support with emotional regulation.

Allied Health Professionals

Our Inclusive Education team work collaboratively with educators, students, parents and Allied Health Professionals to ensure the best outcomes for the students in our care. Many Allied Health Services can be accessed on site including Speech Therapy, Occupational Therapy, Child Psychology, Counselling and Physiotherapy.



The Hub

The Hub is a fun, engaging space for children to access during lunch breaks. In an environment supported by the Inclusive Education team, children can participate in a broad range of activities such as Lego building, games and play experiences designed to support children in developing social skills. This space is specifically designed to help children socially interact whilst having fun and building friendships.



Commitment to Community

The Heart of the Community

At the heart of St Peter's Woodlands is the warmth of our community.

St Peter's Woodlands is well known for its strong community spirit and the warmth displayed towards one another. We encourage community engagement by creating opportunities across multiple sectors of the school, enhancing the overall experience of being a part of the St Peter's Woodlands family.

Strong Partnerships

Positive collaboration between staff and families is an essential partnership when building the foundations for successful lifelong learning. We work together to build strong relationships between parents, staff and children in order to support each child on their learning journey. We offer parent workshops, guest speaker events and parent resources to equip parents as they support their child to learn and thrive.



St Peter's Anglican Church, Glenelg

The relationship with the St Peter's Glenelg Parish is a valued partnership. With a rich history, the Parish Reverends continue to serve our community as Chaplains, offering pastoral support to students, staff and families.

Volunteering

We encourage parents and family members to connect through volunteering in various areas across the school including the canteen, library, reading programs, the arts, excursions and sports programs. Volunteers make a valued contribution to the life of our school, for which we are very grateful.

Parents and Friends Association

The St Peter's Woodlands Parents and Friends Association (SPW PFA) is a vibrant and active body who work together to raise funds for key projects that benefit our children and school. They also create invaluable opportunities for parents to connect and build lasting friendships. We encourage all new parents to our school to connect with the SPW PFA.

Old Scholars' Association

Combining the history of three schools, the St Peter's Woodlands Old Scholars' Association represent many generations of former students. Ensuring children stay connected with each other and connected with the school, the Old Scholars' Association organise reunion events, newsletters and maintain our school museum.





Out of School Hours Care

Beyond the School Day

SPW OSHC (Out of School Hours Care) program provides an exceptional service for families requiring before school and after school care, as well as a fun, engaging holiday program.

The SPW OSHC staff are important members of the St Peter's Woodlands team as they partner with families to care for children beyond the core school day.

The program is designed to provide children a large breadth of opportunities, and ensures activities are tailored to the interests of the children. The SPW OSHC program creates a space for children to play and recharge, as well as develop their social connections and build new friendships.



SPW OSHC Facilities

Enjoying a purpose built environment within the historic Nutter Thomas building, the Centre is a large, collaborative and flexible space, with plenty of resources and games for children to enjoy, with access to an adjoining commercial kitchen and oval area.

SPW Holiday Program

SPW OSHC facilitates a holiday program during each school break catering for Primary school children. The holiday program includes variety of engaging, fun-filled activities, with children often adventuring offsite to attend excursions across the city.



Enrolment

Start Your Learning Journey



At St Peter's Woodlands we love to welcome new families to the community.

Tour Our School

Consider attending a Principal's Tour or Early Learning Centre Open Day to meet the Principal, our teaching staff and to see children actively engaged in their learning. Please visit our website for tour dates.

We also encourage you to arrange a Personal Tour at a time convenient for you. During this tour we can discuss the individual needs of your child and answer your questions.

We look forward to meeting you at a school tour soon.

Follow Us

You can follow St Peter's Woodlands on social [@spwglenelg](#)



Enrolment

How to Enrol



Follow these easy steps to enrol your child at St Peter's Woodlands.

1 Tour Our School

Attend a Principal's Tour, personal tour or another event to see our school in action.

2 Submit an Application for Enrolment

Complete the digital Application for Enrolment Form and submit the form with your child's birth certificate or Passport and \$95 Application Fee. On receipt of the Application for Enrolment Form we will add your child to the database for placement in the appropriate Primary year level or Early Learning program and you will receive confirmation.

3 Letter of Offer

At the appropriate time, you will be contacted in writing with a formal Letter of Offer from the Principal. If a place is unavailable for your child, we will maintain them on the waitlist.

4 Enrolment Interviews

Enrolment Interviews are conducted to finalise the process of enrolments.

Let's Talk

If you would like to discuss your child's education or arrange a visit to our school, please contact St Peter's Woodlands' friendly Enrolments Manager.

E: enrol@spw.sa.edu.au
P: 08 7221 6217
spw.sa.edu.au

Scan to book a tour or access the digital Application for Enrolment Form.



spw.sa.edu.au/enrol



**St Peter's
Woodlands**



St Peter's Woodlands Grammar School Inc.

A Co-educational Anglican Primary School

ABN 93 863 669 897

39 Partridge Street
Glenelg SA 5045

E: administration@spw.sa.edu.au

T: (08) 8295 4317

spw.sa.edu.au

The difference is extraordinary.