

RISE Together

A Strategic Advance for
Learning and Innovation



The difference is extraordinary.



**St Peter's
Woodlands**

Rise: Together

Dear School Community,

As we look to the future of St Peter's Woodlands, we are guided by the same hope and purpose that has always been at the heart of our school—helping every child to grow, learn and flourish. Childhood is a time of wonder, possibility and profound growth. As educators, we embrace our responsibility to lead with adaptability and purpose, cultivating learning environments that inspire curiosity, creativity and courageous thinking. We are committed to laying strong foundations for each child's future in a rapidly changing world.

Together, we are preparing our students not only for the years they spend at SPW, but also for the opportunities and challenges that lie ahead in life. We believe in educating the whole child—academically, socially, emotionally, and spiritually—because we know that when students feel connected, valued, and have a voice in their learning journey, they flourish. This sense of belonging and community extends beyond the classroom, positively impacting not just our students but our entire school community.

At the heart of our strategic plan is a firm commitment to laying a strong foundation in numeracy and literacy, ensuring each child has the essential skills to succeed. Equally important is fostering a lifelong love of learning, along with resilience and perseverance—values that empower our students to overcome challenges and embrace growth. This strategic plan has been many months in the making, shaped through meaningful consultation with our School Council, staff, students, and you—our valued community members. It reflects our shared vision, aspirations, and commitment to providing an inspiring, inclusive, and future-ready learning environment.

Thank you for your ongoing support and partnership. Together, we will continue to nurture curious, resilient, and compassionate learners who are prepared to make a positive impact on the world.

It is with great pleasure we present to you RISE Together – A Strategic Advance for Learning and Innovation.



Mrs Sarah Noell
Acting Principal



Rev'd Michael Lane
Chair of School Council



Purpose, Vision & Values



Purpose

To develop and nurture thriving students who learn together, care for others, and make a positive difference in the world.

Vision

To lead and inspire as an extraordinary provider of Early Years to Primary education.

Values

Wonder

We are curious, share joy and express gratitude.

Courage

We try our best, are honest and resilient and stand up for what is right.

Respect

We show kindness to people and places.

Service

We care for others and seek meaningful ways to contribute.



Motto

The difference is extraordinary.

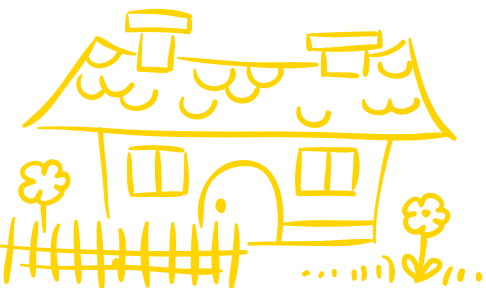




Strategic Pillars

Our Strategic Advance is based around five strategic pillars central to developing thriving students who learn together, care for others in a connected learning community to make a positive difference in the world.

- **Learning and Innovation**
- **Thriving and Wellbeing**
- **Community and Belonging**
- **People and Culture**
- **Sustainability and Growth**





Learning & Innovation

Our innovative approach to learning, from the Early Learning Centre through to the Primary years, is to nurture the whole child through research-informed teaching, real-world inquiry, and personalised support that empowers every student to thrive.

Commitments

- Implement a modern, evidence-based curriculum that actively engages students in meaningful learning from the Early Learning Centre through to the Primary Years.
- Maintain a strong, consistent focus on developing literacy and numeracy skills.
- To provide an extraordinary extra-curricular program including performing arts, sporting and academic opportunities, allowing every child an opportunity to grow their strengths and interests.
- Refine ongoing assessment strategies to strengthen feedback, enhance reporting, and improve student learning and parent partnerships.
- Champion high-impact teaching through our bespoke award-winning Project RISE learning framework.
- Lead early years and primary education with forward thinking, technology-integrated practices.
- Empower Year 6 students through our DARE Graduate Diploma, equipping them with the skills, confidence, and mindset needed for a successful transition to secondary school and life beyond.





Thriving & Wellbeing

Our approach focusses on supporting each student's wellbeing, with a dedicated Wellbeing team, and a commitment to ensuring every child is valued, supported, and empowered to grow and thrive.

Commitments

- Each student is known and cared for.
- Nurture and grow the social, emotional, spiritual, physical and academic development of students.
- Build student's intrinsic motivation to strengthen self-belief and ownership of learning.
- Recognise and celebrate growth and achievement of students, staff and community.
- Evidence-based wellbeing programs from Early Learning to Year 6.
- A dedicated Inclusive Education and Wellbeing team supported by Allied Health professionals.





Community & Belonging

Our school cultivates a deeply connected and inclusive community. We are shaped by a strong Anglican identity, actively engaging in Religious and Values education and opportunities to connect with our community through service.

Commitments

- Create meaningful opportunities for students to serve, engage with, and learn about their local and global community.
- Foster genuine parent/caregiver connections and partnerships with the school through inclusive, school community-focussed initiatives.
- To support an active Parents and Friends Association and Old Scholars network to strengthen community and foster lifelong connections.
- Deepen understanding of and connection to Kurna heritage, culture, and Country throughout the school community.
- Strengthen our relationship with the Anglican Parish of St Peter's Glenelg through shared values, connection, and collaboration.
- Build strong and supported pathways to secondary schools, ensuring students are well prepared for their next stage of learning.





People & Culture

Our school is committed to being a leading employer by attracting and retaining exceptional staff through a strong focus on professional development, a culture of collaborative practice and wellbeing.

Commitments

- Partner with world-renowned educators and academics to enhance teaching and learning excellence.
- Design and implement a comprehensive leadership development program for middle and aspiring leaders.
- Strengthen partnerships with universities to support and mentor the next generation of teachers.
- Share innovative practices with other schools and build a reputation as thought leaders in early years to primary education.
- Expand connections with leading interstate and international schools to foster global perspectives and collaboration.
- Establish robust feedback channels to actively listen to staff and support continuous improvement.





Sustainability & Growth

We are committed to responsible fiscal management through rigorous benchmarking, outstanding governance, environmentally aware practices and a balanced approach to developing exceptional facilities now and for generations to come.

Commitments

- Embed environmental awareness through education, daily practices and student led sustainability projects.
- Implement financial benchmarking to ensure long-term sustainability and support future growth.
- Attract and retain ongoing enrolment growth through strategic planning and engagement.
- Maintain and develop exceptional facilities in alignment with the school's Master Plan.
- Foster a strong culture of philanthropy to support the school's mission and vision championed by the SPW Foundation.
- Ensure accountable, transparent governance through a skilled and diverse School Council.





PROJECT
rise
A LEARNING FRAMEWORK

Project RISE is a bespoke learning framework developed by St Peter’s Woodlands and designed to provide the very best learning environment and outcomes for each and every student.

Project RISE aims to develop a culture in which there is a clear and collective understanding of the valued and sought-after outcomes of education and the character strengths developed as a result of that education. It underpins and drives everything we do at school, including the Australian Curriculum content, the timetable, how we assess students, communication with parents, reporting and most important of all the pedagogical style of every member of staff. By using a combination of the this and actively seeking feedback from our students to monitor the effectiveness of our teaching, St Peter’s Woodlands is committed to paving the way for a successful learning journey for each and every child.



Research Driven



Innovative



Student Centred



Extraordinary



Collaborative



Resilient



Critical Thinkers



Problem Solvers



Responsible Citizens



Empathetic

Enduring Qualities

Qualities that will be enduring in the students long after their time at St Peter’s Woodlands





**St Peter's
Woodlands**

The difference is extraordinary.