

THE WEEKLY

Inside this issue

- * From the Deputy Principal
- * Photograph Orders—Sports & Groups
- * Save the Date
- * Sports News
- * SPW School Camp Week
- * Maths Attack
- * The Arts
- * Uniform Shop
- * Canteen
- * SRC Whole School Event
- * Digital Technologies
- * SPW Car Park off Partridge Street
- * Chaplain's Chat
- * The Friendship Lord's Prayer
- * PFA News
- * Visitors & Volunteers at SPW
- * Lost Property
- * Absentee Line
- * Late Arrivals/Early Leavers
- * Making the Partridge Street Kiss & Drop Zone Safer
- * The Week Ahead

From the Deputy Principal

It has been a cold start to the week and I trust you have had the fires burning and the winter woollies on to keep warm this week as July has hit us with some of the coldest mornings for a number of years. This has not dampened the children's enthusiasm and it has been great to see them happily engaged in various games and activities.

The students have continued their active start to the term and have been fully engaged in their learning as well as the many other events at SPW including 'Joseph' musical rehearsals and the Senior Specialist Netball Squad's Knockout Netball match.

Earlier this week Luke from Wilderness Escape presented 3 parent camp sessions detailing the activities in which the children will be involved at each of the Year 3 to 7 camps. If you were unable to attend and have any questions, please don't hesitate to contact either Luke or myself. A reminder to complete the online forms for Wilderness Escape and return the hard copy permission slip to your child's teacher.

As the week draws to a close so does the exchange experience for our five Japanese students from Seibo School; the enthusiasm shown by them and our students has been wonderful to observe. This was a great experience for our students also to have the opportunity to practise their Japanese.

Tomorrow evening our host families farewell our Japanese exchange students who have been so generously hosted by SPW families and staff. Thank you to Sensei Baldacchino for all the time and effort she put into organising this extraordinary opportunity for the students.

Until next time, have a relaxing weekend.

Simon Theel

Photograph Orders—Sports & Groups

Photographs for winter sports, music groups, and SRC Semester 1 are now available for order.

To view and order photos:

- * Go to www.advancedlife.com.au and enter the 9-digit online code **X4h 6AV YE8** at the prompt box
- * Select "Browse Group Photos" from the menu
- * Select the photos you wish to purchase, using the on-screen instructions
- * When you have chosen all groups to order, select "View Shopping Cart" and follow the prompts to complete your order

Join us on [Facebook](#)
and [Twitter](#) (or email)



If you have any questions about the online ordering system, please contact Advanced Life directly, using the contact details on the site above.

All photographs ordered will be delivered to school. If you are unable to use online ordering, please collect an order form from Front Office. Please note that credit card orders may only be made using the online system. Cash/cheque orders will need to be placed by Wednesday 12 August.

Any further questions about school photos can be addressed to Simon Theel by emailing stheel@spw.sa.edu.au or Kate Anolak by emailing kanolak@spw.sa.edu.

Save this Date

YEAR 7 FORMAL

The Year 7 Formal will be held in Baddams Hall on Friday 16 October from 7.00pm to 9.30pm. A letter with more information will be sent out later this term.

Huw Bowen
hbowen@spw.sa.edu.au
 0413 244 539

Sports News

SPORTS RESULTS:

SOCCER

SPW Gold U/9	3 goals	Craigburn PS	0 goals
SPW Silver U/10	4 goals	Mercedes College	4 goals
SPW Gold U/11	3 goals	Craigburn PS	0 goals

DISTRICT ATHLETICS TEAM TRIALS AND SELECTION

The SAPSASA District Athletics Championships are on Thursday 27 August (Week 6, Term 3) at SA Athletics Stadium.

ATHLETICS PRACTICES FOR SCHOOL TEAM

There are a number of Athletics practices and trials occurring regularly over the next few weeks, weeks 3 to 5. Please ensure your child is aware of when they are required.

Students in SAPSASA years, born 2005, 2004, 2003 and 2002, are encouraged to try out and attend the following practices:

WEEKS 3-5

- * *Monday Lunchtimes*
 High Jump Baddams Gym
 Throws, 12 (2003) & 13 (2002) year olds Sports Shed, McKenzie Oval
 Please note that your child should notify me if they wish to attend both
- * *Wednesday Before School (8.15-8.45am)*
 Run Club: 100m, 200m, 800m, relay runners
 (all other runners from Years 3 to 7 are welcome to attend)
 Throws, 10 (2005) & 11 (2004) year olds Sports Shed, McKenzie Oval
 Please note that your child should notify me if they wish to attend both
- * *Friday Lunchtime*
 High Jump Baddams Gym
 Beach Run: 100m, 200m, 800m & Relay Teams Sports Shed, McKenzie Oval
 (All other runners from Years 3 to 7 are welcome to attend)
 Please note that your child should notify me if they wish to attend both.

SAPSASA DISTRICT TENNIS TRIALS

Please see me for letters and nomination forms.

Huw Bowen
Sports & PE Coordinator

SPW School Camp Week

Please find below the dates and venues for the 2015 Camps.

Year 2	Sleepover at SPW	Friday 11 September
Year 3	Woodhouse	Monday 7-Wednesday 9 September
Year 4	Douglas Scrub	Monday 7-Wednesday 9 September
Year 5	Roonka, Blanchetown	Wednesday 9-Friday 11 September
Year 6	Flinders - Melrose	Wednesday 9-Friday 11 September
Year 7	Hindmarsh Island	Tuesday 8-Friday 11 September

Information about the Year 2 sleepover will be distributed later this term.

Simon Theel
Deputy Principal



Maths Attack

NEW game.....SPIDER WEB

Addition skills

Find this new game on the wall just past the Japanese room.

Angela Doan
Learning Support Teacher

The Arts

TERM 3 SENIOR MUSICAL REHEARSAL SCHEDULE—'JOSEPH AND THE AMAZING TECHNICOLOR DREAMCOAT'

From next week, Tuesday afternoon rehearsals have been extended to a 5.30pm finish; there will also be two Sunday rehearsals. Students are required to bring an 'easy to eat' snack and water to rehearsals, as well as their lunch to Sunday rehearsals. If children are unable to attend a rehearsal, please email me directly at mdelaine@spw.sa.edu.au. Thank you.

SPW Wk	Date	Day	Who is required	Time	Venue
2	August 2	Sunday	Entire cast & crew (Years 4-7)	10.00am-4.00pm	Chapel
3	August 4	Tuesday	Entire cast & crew (Years 4-7)	3.15-5.30pm	Chapel
3	August 9	Sunday	Entire cast & crew (Years 4-7)	10.00am-4.00pm	Chapel
4	August 11	Tuesday	Entire cast & crew (Years 4-7)	3.15-5.00pm	Chapel
4	August 11	Tuesday	Entire cast & band (Years 4-7)	7.00-8.30pm	Chapel



TICKET SALES FOR 'JOSEPH AND THE AMAZING TECHNICOLOR DREAMCOAT'

There will be three performances for you to choose to attend:

Thursday 20 August, 7.30pm
Friday 21 August, 10.00am
Friday 21 August, 7.30pm

The musical is being held at Walford Anglican School for Girls, 316 Unley Road, Hyde Park, in the Helen Reid Hall.

Ticket sales will be available via the Trybooking link <http://www.trybooking.com/INDX> and <http://www.trybooking.com/149497>.

We look forward to seeing you at the 2015 Senior Musical.

BAND PRACTICE

Please note that Band Practice has been cancelled until the conclusion of the musical. It will recommence as from Week 6.

Mark DeLaine
The Arts Coordinator

Uniform Shop

I would like to advise that we now have new hair accessories available. Pop into the shop and see the lovely range now in stock.

Please note: Due to an excursion **the Uniform Shop will be CLOSED on Tuesday 4 August.**

Tiona Ryan

Uniform Shop Manager



to Julie Stone for your assistance in the Canteen this week. It has been very much appreciated.

Canteen

THURSDAY SPECIAL

Large Ham and Cheese Croissant for \$5.00—can only be ordered via Qkr! Download now for a quicker and more convenient way to order your child/children's lunch.

Rosie Elphick

Canteen Manager

SRC Whole School Event

No person who is homeless should feel like they're walking alone.

At 1.30pm on Friday 7 August, all children at SPW, from Reception to Year 7, will take part in a 'Walk a Mile in my Boots' event. This is a key event for the Hutt Street Centre and takes place at various places across Adelaide. In order that the whole school community can take part, we have decided to hold our own event at school. Children and staff will walk from the school, down Pier Street to the Esplanade and then along to Moseley Square before returning to school. The procession will be led by the SRC who will carry banners advertising the purpose of our walk. Classes will also carry placards bearing key messages about homelessness. We would love it if as many parents as possible were able to join us for this important walk. If you do plan to join us, please let your class teacher know in advance, and please meet your class at the Pier Street Gates at 1.30pm.

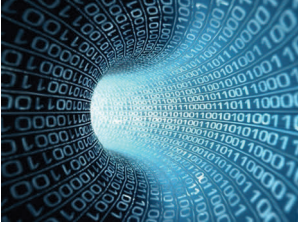
As well as walking the mile, we would like to go the extra mile for people experiencing homelessness in South Australia by fundraising. Children are encouraged to seek donations from family, friends and neighbours. A sponsor pledge form was attached to last week's Weekly. Alternatively donations can be made directly on the SPW fundraising page by following the link below:

<http://huttstcentre.gofundraise.com.au/page/SPWSRC>

This event will be a fantastic opportunity for the SPW community to stand together and show their support for a cause, which is an important message for our children. It is hoped that 'Walk a Mile in my Boots' will give everyone a better insight into what people who are vulnerable and experiencing homelessness face each cold winter morning – walking the streets to get breakfast, a cup of tea and a hot shower – by experiencing a tiny part of that life for one hour, walking one mile.

We very much hope that you are able to join us for what will no doubt prove to be a fun filled afternoon. If you have any questions about this event or any of the work of the SRC please do not hesitate to contact Kerry Ramsay, kramsay@spw.sa.edu.au or Barbara Sanderson, bsaunderson@spw.sa.edu.au.





Digital Technologies

With the introduction of Digital Technologies into the Australian Curriculum, the Year 5-7 students have been learning about the use of binary number and its place in the computer world. An interesting fact about computers is that, in very simple terms, they really only understand data, text, numbers, sounds, images, through switches that are turned on or off. For example if 0 = off and 1 = on the number 1 is represented as 00000001; 2 is 00000010; 3 is 00000011; 4 is 00000100 and 128 is 10000000. The letter A = 01000001 (65); B = 01000010 (66) and so on.

ANSWERS

00100010 = 89
 11010100 = 48
 11011000 = 27
 11110000 = 15

Can you follow the pattern? If you have a child in Year 5-7, ask them to attempt an explanation. Try representing the following numbers in binary: 15; 27; 43; and 68. Good luck!

Geoff Bilney
 ICT Teacher

SPW Car Park off Partridge Street

As of Week 4, parking in the Partridge Street car park will be restricted to permit parking only, with minimal vacancies for visitors, disabled parking and loading zone. This decision has been made in order to improve the safety of this area, particularly at the beginning and end of the school day. To facilitate this process, we have new line marking, with improved signage, making it clear that:

- there is permit parking only, and
- Kiss and Drop zones are 30 second stop zones only.

Please refer to Page 8 for more information.

Chaplain's Chat

International Friendship Day, 30 July, took on great significance for our Chapel Service this week, thanks to the presence of our friends from Seibo, Japan. Whilst this United Nations day is not one that is hugely celebrated in Australia, it is very significant in some countries and certainly a celebration with which we can all connect.

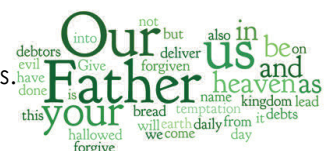
Friendships are very important in our lives, and where those friendships can transcend barriers in our world, they are of even greater significance. The Parable of the Good Samaritan (Luke 10:25-37) offers us Jesus' teaching that friendship and compassion can powerfully unite people of difference. I certainly resonate with the words of the UN Secretary General, Ban Ki-moon, when he says: *"On this International Day of Friendship, let us strengthen bonds among individuals and generate greater respect and understanding in our world."*

Next week's Chapel Service, Thursday 6 August, 8.45am, will be a celebration of Grandparents and Special Friends day for the Year 4 and 5 students. Other classes will have Chapel time in their classes or year levels.

Fr Andrew Mintern
 School Chaplain

The Friendship Lord's Prayer

Dear God,
 Like a good friend, you care for us, you love us, you guide us.
 May heaven and earth be filled with your friendship.
 Please give us what we need, each and every day.
 And help us to share generously,
 In a spirit of friendship, with those in need.
 Forgive us if we hurt a friend,
 And help us to be patient and forgiving if a friend says sorry to us.
 Protect us and keep us safe always.
 For the friendship and love of your kingdom rules forever.
 Amen





PFA News

PFA MEETING NEXT WEEK

We look forward to seeing lots of people next Wednesday, 5 August, at the first PFA Meeting for the term. We have lots of things to talk about and decisions to be made. 7.30pm in the Nutter Thomas Dining Room.

ENTERTAINMENT BOOKS - FINAL CHANCE

This is the last chance to order Entertainment Books

<https://www.entertainmentbook.com.au/orderbooks/160p940>

MONDAY BARBECUES

The barbecues this term are being run by our wonderful Reception parents. Your assistance will be gratefully received. Please email pfa@spw.sa.edu.au indicating the week that you would like to help out. A roster will also be on the window of the shelter shed. Thank you.

SATURDAY SOCCER BARBECUES

All boys soccer families will have recently received a notice with details of the date and time slot that they have been asked to help with. There are only 2 more home games and the barbecue is a great way to beat the cold on a Saturday morning. You have not been rostered on at the time of your child's game. We would really appreciate you lending a hand so all parents can enjoy the game with coffee, and an egg and bacon muffin. Please email pfa@spw.sa.edu.au or text Jane on her mobile, 0402 235 573.

For those who missed the notice, here are the allocations:

	1 August	20 August
8.00am—8.30am	Senior Boys 1	Year 3 / Under 9
8.30am—9.30am	Senior Boys 2	Year 4 / Under 10 Gold
9.30am—10.30am	Year 4 / Under 10 Silver	Year 5 / Under 11

FATHER'S DAY BREAKFAST

The Father's Day Breakfast will be upon us before we know it. Year 6 families, this is your event. It may be a really good time to start organising a committee. Feel free to contact the PFA for any direction you may require.

YEAR LEVEL EVENTS

All year level events planned for the end of the year are to be communicated to the PFA before the end of Term 3, Week 5. Please email us if you wish to receive the \$300 as promised by the PFA to all year levels. Your event will need to be inclusive of all across your year level.



Visitors and Volunteers at SPW

St Peter's Woodlands encourages and welcomes parents and friends to be part of our activities – helping in a variety of ways including in classrooms, the Library and Canteen. We value highly, and are grateful for, your participation in these aspects of your children's education.

If you are visiting our School, we ask that you call into the Front Office where you are to sign our Visitor's Book and receive a badge before proceeding on with your business. This procedure enables us to ensure the safety of your children at all times by identifying legitimate visitors to our School. Also, your presence here is recorded for your safety should an emergency arise.

If you are interested in becoming a volunteer with us, we have in place a Volunteer Policy which requires all volunteers to:

- * Complete a Volunteer Agreement Form relating to qualifications and experience and including names of referees
- * Complete a Police Screening check
- * Undertake appropriate induction training, if required.

Volunteers will be assessed for their suitability to work at the School by the Principal/ Nominee. This assessment is made in relation to the skills and contributions being offered and only after verification of the person's good character. The Principal/ Nominee's decision in determining eligibility to work as a volunteer at St Peter's Woodlands Grammar School is final.

If you would like further information please visit our website, go to the 'Parents' Tab, which includes a Volunteer Information Booklet and copy of the Volunteer Agreement. Alternatively, please contact our HR Manager, Laura Sarich.

Lost Property

Once again the lost property bins under the stairs in the Law Smith Building are full to overflowing with jumpers and windcheaters. If you have a child who is missing one of these items, would you please ask them to look in the lost property bins. There are also currently many other miscellaneous items in the specially marked bins.

Absentee Line

If you suspect your child to be ill, please keep him/her at home and notify the school by telephoning **7221 6221 before 9.00am**.

Late Arrivals/Early Leavers

As per the Student Diary (see page 15), "Students are to be at school ready to commence the day at 8.30am. If you know that your child will be arriving late, please inform the child's class teacher in advance or phone **7221 6221 before 8.30am**."

Students arriving late are to report to their class/teacher and may then need to visit the Front Office to confirm their arrival.

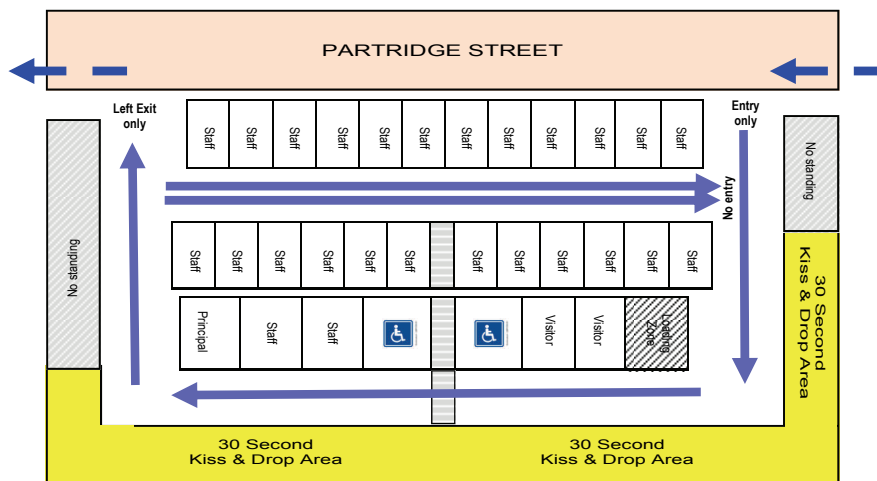
If your child arrives at school after 8.30am, or leaves early for an appointment, the parent/caregiver is to sign the child in and/or out by visiting the Front Office.

Those students leaving the school grounds early are to be collected from the classroom by an adult after the adult has signed the student out at the Front Office. Students are not permitted to wait on the footpath or in the car park."

Making the Partridge Street Kiss & Drop Zone Safer

- Enter the Partridge Street car park as left turn only from Partridge Street.
- Avoid straddling the bike lane and footpath, when entering Partridge Street (hence avoiding traffic infringements).
- Exit Partridge Street, left turn only.
- **When entering SPW grounds, drive on solid blue line and keep rotating until you see your child ready to be picked up.**
- The pick up zone is marked yellow and is a 30 second Kiss and Drop zone only.
- Please instruct your children to stay on the Chapel steps and watch for your car, so that they are ready to be picked up from this yellow zone.
- DO NOT PARK AND WAIT IN THE KISS & DROP ZONE
- Children should not be picked up if your car is on the blue rotating line.
- Please observe the car park markings for Disabled, Visitor, Staff and Loading zone parks.

The above instructions apply during the hours of 8.00am and 4.00pm.



The Week Ahead



2015 Term 3 Week 3

Monday 3 to Friday 7 August

Contact Us

	Monday	Tuesday	Wednesday	Thursday	Friday
Canteen	NO HELP REQUIRED	HELP REQUIRED	HELP REQUIRED	HELP REQUIRED	LEONIE HUGHES
School	<ul style="list-style-type: none"> * Uniform Shop Hours <ul style="list-style-type: none"> ◇ 8.15am—9.00am ◇ 2.30pm—4.00pm 	<ul style="list-style-type: none"> * Uniform Shop Hours <ul style="list-style-type: none"> ◇ 8.15am—9.00am ◇ 2.30pm—4.00pm * Whole School Assembly (Chapel) - 2.30pm * Year 5 Excursion to Old Taillem Town, Taillem Bend—8.30am * Optional Parent-Teacher Interviews 	<ul style="list-style-type: none"> * Uniform Shop Hours <ul style="list-style-type: none"> ◇ 8.15am—9.00am ◇ 2.30pm—4.00pm * Year 1NC & 1NF Road Safety Excursion—10.15am * Illustrator Visit - Years 2/3 * ASNG Student Leadership Workshop—12 noon * Author Visit - Years 4/5—2.10pm (Chapel) * Optional Parent-Teacher Interviews 	<ul style="list-style-type: none"> * Uniform Shop Hours <ul style="list-style-type: none"> ◇ 8.15am—9.00am ◇ 2.30pm—4.00pm * Year 4/5 Grandparents Day * Chapel Service, Year 5 Led—8.45 am ((St Margaret's Chapel) * Year 1PH & 1LL Road Safety Excursion—10.15am * Optional Parent-Teacher Interviews 	<ul style="list-style-type: none"> * SRC Event—Walk a Mile in my Boots—whole school walk—1.30pm * Optional Parent-Teacher Interviews
Extra & Co Curricular	<ul style="list-style-type: none"> * District Athletics Team Trials—Lunchtime—High Jump (Baddams), Throws 12 (2003) & 13 (2002) year olds (Sports Shed, McKenzie Oval) * Games Club R-7—12.50-1.30pm (The Hub) * Soccer School of Excellence Training—Girls (lunch time) * MP & JP Activities * Year 6/7 Football, Soccer, Netball Training—3.30-4.30pm 	<ul style="list-style-type: none"> * SPW Band—8.15-8.55am (Music Suite) * Chapel Choir—12.50-1.30pm (Chapel) * Junior Choir—12.50-1.30pm (Music Suite) * Knitting Club—12.50-1.30pm (The Hub) * Lego Technic/ Construction Club (Yrs 4-7)—12.50-1.30pm (The Hub) * Yoga Yrs 3-7—12.50-1.30pm (Baddams Hall) * 'Joseph' Rehearsals—3.15-5.30pm (Chapel & Music Suite) * SDJSA Soccer U/10 Yr 4 Carnival—5.15pm (Bowker Street Reserve) * Debating Competitions—6.30pm (Pulteney) 	<ul style="list-style-type: none"> * SAPSASA District Basketball Girls—8.30am (Marion Stadium) * Run Club—8.15-8.55am (Mackenzie Oval) * District Athletics Team Trials 100, 200, 800m, relay runners, Throws, 10 (2005) & 11 (2004) year olds, Sports Shed, McKenzie Oval * Chess Club—12.50-1.30pm (The Hub) * Show Choir—12.50-1.30pm (Music Suite) * Year 5-7 Netball Matches (various) 	<ul style="list-style-type: none"> * Chapel Choir & Band—8.15-8.45am (Chapel) * Comic Writing Club - 12.50-1.30pm (The Hub) * Flute Ensemble—12.50-1.30pm (Chapel) * Lego Construction Club (Rec-Yr7)—12.50-1.30pm (The Hub) * Percussion Ensemble—12.50-1.30pm (Music Suite) * Debating Practice, 3.30-4.30pm (Library Seminar) * Tournament of Minds, 3.30-4.30pm (Library) * Year 3-4 Netball (various) 	<ul style="list-style-type: none"> * Year 6-7 Co-curricular Activities 8.15-8.55am (Various) * SAPSASA District Basketball Boys—8.30am (Pasadena) * Games Club—12.50-1.30pm (The Hub) * District Athletics Team Trials—lunchtime—High jump (Baddams), Beach Run: 100m, 200m, 800m & relay teams (Sports Shed, McKenzie Oval) * Netball SoFE matches <p>SATURDAY MORNING</p> <ul style="list-style-type: none"> * Years 3-7 Soccer matches * Year 3 Football matches * Year 4-5 Football matches <p>SUNDAY</p> <ul style="list-style-type: none"> Musical rehearsal (Chapel) -
PFA	PFA Sports BBQ , 3.15-4.00pm		PFA General Meeting , 7.30pm (Nutter Thomas)		SATURDAY PFA Sports BBQ , 8.30-12noon

Front Office
8295 4317
administration@spw.sa.edu.au

Student Absentees
7221 6221
absentees@spw.sa.edu.au

OSHC
0411 298 878 Camp Australia

Finance Office
7221 6229
finance@spw.sa.edu.au

Canteen
7221 6216
Rosy Elphick, Manager
rphick@spw.sa.edu.au

Website
spw.sa.edu.au

St Peter's Woodlands is an IB World School accredited in the International Baccalaureate Primary Years Program (PYP)



St Peter's Woodlands Grammar School Inc
39 Partridge Street Glenelg SA 5045
A Co-educational Anglican Primary School