

THE WEEKLY



Issue 35, 8 December 2017

Inside this issue

- * From the Principal
- * Communication at SPW in 2018
- * Lost Property
- * PE & Sport
- * The Week Ahead
- * SPW OSHC Holiday Program
- * The Arts
- * PFA News
- * Chaplain's Chat
- * Parish News

From the Principal

This is the last time that The Weekly will be in its current form, hence my final opportunity to write to parents/caregivers for the 2017 school year.

The last week has had a number of memorable moments some of which I am going to highlight. The first was the joyous celebration of our children's musical talents at the Norwood Town Hall. To experience the joy of children performing was most heartening. The second was performance related again, and highlighted the growth that we have all seen with our Foundation children, after one year of schooling, performing the Nativity. In front of a packed Chapel, the children were simply sensational. This was a timely reminder of their development from the Saturday morning transition at the end of December 2016 to now. The final highlight was our traditional sit-down lunch, with the children from Foundation to Year 7 in Baddams Hall. This event captures the culture of SPW like no other, and we are extremely thankful to Kelly Delfos, Sheree Bailey and other parents for coordinating and helping with this event. Although it hasn't been held yet, the PFA do host an Early Learning Centre brunch next week, and I am sure this will also be a grand occasion.

In closing for 2017 I want to wish our Year 7s and others leaving SPW all the very best in their future education, and I want to take this opportunity to thank parents/caregivers, families, staff, volunteers, and children for helping make 2017 another memorable year at SPW.

Christopher Prance

An Irish Christmas Blessing

The light of the Christmas star
to you,
The warmth of home and
hearth to you.
The cheer and good will of
friends to you,
The hope of a childlike heart
to you,
The joy of a thousand angels
to you,
The love of the Son,
And God's peace to you.

Communication at SPW in 2018

As previously mentioned in The Weekly Issue 33, we would like to remind parents we will be transitioning to digital communication across ELC to Year 7 in 2018 and phasing out paper notes, newsletters and consent forms. Over the last two years the ELC to Year 2 have been conducting communications in this manner and we are happy to continue the transition throughout the remainder of the school.

To ensure clear, accurate and timely communications we will continue to utilise Skoolbag as our SPW app. The app is available as a download to your device and is also accessible [via the SPW website](#). If you need support with accessing Skoolbag please contact [Kate Anolak](#).

Throughout Term 4 we have been reviewing the way we structure information within the Skoolbag app in an effort to improve your user experience. We have made some changes and are continuing to work on improving our communications via this tool.

In addition to the app we utilise email to target communication to specific groups or send a message to the entire school community. Both email and Skoolbag are important communication tools within the life of our school. If you are unsure of your email details on our system please [contact Sam Wheatley](#).

We'd like to note that this is the final issue of The Weekly in this PDF format. The information within The Weekly has been re-assigned to the relevant categories

[Facebook](#) [Twitter](#) [Email](#)



within Skoolbag. The timetable information is now available via our online calendars accessible in Skoolbag or [on the SPW website](#). We understand many families rely on The Weekly for updates and reminders. We are committed to supporting families with this critical information delivered in different ways. By transitioning away from The Weekly in the PDF format we are activating strategies to improve our efficiencies and our ability to respond in timely ways.

At the commencement of the 2018 School Year we will email all families with further information about communications at SPW, containing specific tutorials and details on how to stay connected at SPW.

Lost Property

We have lots of lost property under the stairs in the Law Smith Building that needs to find their owners. All school clothing that is named is returned via the communication folders so what is currently in the tubs is unnamed. To ensure we start 2018 with empty tubs we will be disposing of any items left after 12.30pm on Wednesday 13 December.

PE & Sport

HERE ARE OUR FINAL 'SPORTS SHORTS' FOR THE YEAR

- * Term 4 After School Sports practices have finished. There will be no sports sessions in Week 9. Sports will return in Week 2 of Term 1, 5–9 February 2018.
- * Thanks to all our team managers for your organisation this term. Without your support our teams would certainly not have run as smoothly. If each team's First Aid kit could be returned before the school holidays that would be appreciated.
- * If any 2018 Year 2s would like to join the 2/3 football team [please email me](#) before the end of the year.
- * Please return any winter sport uniforms for a credit card refund by the end of this term. Refunds can only be provided by the Uniform Shop. The Uniform deposit will be forfeited for any uniform not returned by then as we will need to order new ones before the holiday break to ensure we have enough stock for 2018.
- * Our Sports Assembly is on Tuesday 12 December at 2.00pm in the Chapel. This annual assembly is a time to recognise individual and team sporting high achievements. It also acknowledges the children who have represented SPW for a long period of time with colours and half colours. Children from Years 4 to 7 will be attending. If you are free please come along.
- * As this our last PE and Sport communication for 2017 we would like to thank you for your support throughout our first year in the role. We wish you a safe and relaxing festive season. We look forward to returning bigger and better in 2018.

Have a great holiday.

Stay calm and keep active.

Alastair Dow
Head of PE and Sport
adow@spw.sa.edu.au

The Week Ahead

Please refer to our Skoolbag app in relation to dates of events for next week. Of particular note is:

TUESDAY 12 DECEMBER

- * 8.45am Final Assembly, Years 3-7 (Baddams Hall)
- * 10.30am ELC Christmas Brunch (Village Square, ELC)
- * 2.00pm Sports Assembly (Chapel)

WEDNESDAY 13 DECEMBER

- * 8.40am Chapel Communion Service (St Margaret's Chapel)
- * **12.30pm School finishes for 2017**
- * 6.30pm Year 7 Valedictory Service (Baddams Hall)

SPW OSHC Holiday Program

The December/January SPW OSHC Holiday Program is available. For those already registered with the service bookings can be made through the My Family Lounge app or the [Out of Hours Care page on the SPW website](#). New registrations will need to start at the website. Please refer to the program on page 6 of this newsletter.

In response to the recent survey feedback please note the Holiday Program operating hours have changed to 7.30am-6.00pm with a \$1.00 increase per day to partially offset the increased cost to the service.

The Arts

JUNIOR GLEE, SHOW CHOIR & SPW BAND

* All Week 9 Sessions are cancelled: there are no Extra-Curricular Arts activities Week 9.

MUSIC RESULTS

Congratulations to the following students on their Music results:

ANZCA PIANO EXAM RESULTS (Tutor: Jenny Campbell)

Grace G	Preliminary	A+
Tahlia M	Grade 1	A+
Charlotte C	Grade 1	A+

AMEB CLARINET & SAXOPHONE EXAM RESULTS (Tutor: Sheryl Fox)

Zara C	Grade 1 Clarinet	A
Sophie R	Grade 2 Saxophone	B+
Louis D	Grade 3 Saxophone	B

Mark DeLaine
Head of the Arts



PFA News

CHRISTMAS LUNCH

The children all had a great time this morning and certainly celebrated the end of the year in true Christmas spirit. A special thanks to Kelly Delfos and Sheree Bailey and their band of parent helpers who coordinated this year's lunch.

ELC CHRISTMAS BRUNCH - [TUESDAY 12 DECEMBER](#)

For more information about the lunch/brunch [click here](#).

The ELC will celebrate the end of the year with their own brunch next week on Tuesday. Thanks to Rose Zitis and Angela Parker for assisting the PFA run this event.

SIGN OFF FOR 2017

Thank you to all our amazing volunteers and PFA representatives. You have all made this a truly successful year. The PFA could do nothing without all of your commitment and dedication. Thanks also to the school's Development Office, especially Karen Schaumlöffel, the Leadership Team, and the many office staff who continue to support and assist us. We look forward to another amazing year of PFA events in 2018. Thanks again and enjoy your summer holidays.

Regards the PFA Executive team

Chaplain's Chat

CHAPEL

What a wonderful presentation of the Christmas message by the Foundation students in their nativity play, *Christmas Counts, a Nativity You Can Count*. Many thanks to the staff who worked very hard to help the students prepare. Next week we will hold a Christmas Communion Service on Wednesday 13 December. This will include the play *Away in a*

Manger presented by the Chapel Choir and Band. Thank you to Mr DeLaine, Mr Mesecke, Ms Lewis and Ms Campbell for their work throughout the year on the performing Arts. We are privileged to have such talented and dedicated staff at our school.

ANGLICARESA CHRISTMAS HAMPER APPEAL

The next few days present the final opportunity to make donations of non-perishable foods to our annual AnglicareSA Christmas hamper appeal. Please leave contributions under the tree in the Chapel. Thank you.

Rev'd Julia Denny-Dimitriou

Parish News

SPW & PARISH COMMUNITY CAROL SERVICE

I look forward to seeing many of you at the SPW and Parish Community Carol Service this **Sunday 10 December at St Peter's Church (Torrens Square, Glenelg) at 5.00pm**. It is always a beautiful end of year celebration to share between School and Parish. A feature of the Service will be a nativity play 'Away in a Manger' presented by the SPW Chapel Choir and Band. All Welcome.

CHRISTMAS SERVICES AT ST PETER'S

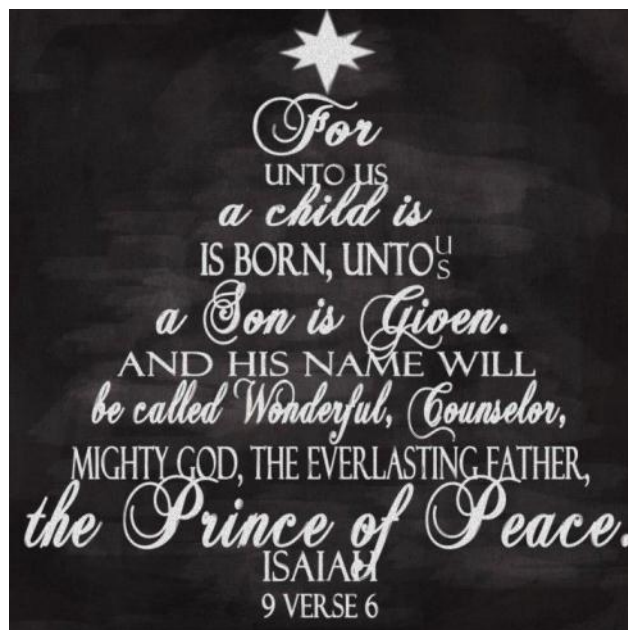
The most popular of our Christmas Services is the **Families Nativity Service at 6.30pm Christmas Eve**, Sunday 24 December (*please note earlier time this year*). We will also have a 10.30pm Midnight Mass on Christmas Eve and a 9.00am Service on Christmas Morning.

GIVING THANKS FOR PAST YEAR

As I sat mesmerised by the wonderful nativity presented by the Foundation students this week, I paused to give thanks for the incredible Chapel Services we have been given through the year. Staff, students, Mother Julia and Mr Prance are to be congratulated for the week-in week-out inspiration that these Services provide to our community. Well done everyone.

Rev'd Andrew Mintern

A Christmas Message



**AnglicareSA
Christmas Appeal**

This Christmas, AnglicareSA aims to hand out over 1,000 food hampers to support families, adults and individuals who have no-one else to turn to.

Can you assist in providing any Christmas hamper items?

Your donations can be placed under / around our Christmas tree located in the Chapel. The Hope Mobile will collect donations after the final Communion Service on Wednesday 13 December.

Thank you, in advance, for your generous support.

ANGLICARE
HELP TO HELP SA
ANGICARE
Charity Office
127 Park Road
MIDDLEBROOK SA 5037
P. 080 830 9200 F. 080 830 9200
www.anglicare.org.nz

SPW
EARLY LEARNING AND
PRIMARY EDUCATION

Christmas Hamper Items

Non-perishable foods such as:

- * Tinned ham and tuna
- * Canned potatoes
- * Canned vegetables
- * Cereals, Weetbix, Cornflakes, Rice Bubbles etc
- * Canned fruit
- * Coffee, tea, Milo
- * Long life full cream milk and cream
- * Spreads, Vegemite, peanut butter, jams etc
- * Pasta and simmer sauces
- * Toiletory items
- * Christmas cakes, fruit mince pies
- * Christmas treats and snacks

SPW Christmas Community Service

In partnership with St Peter's Anglican Church, Torrens Square, Augusta Street, Glenelg

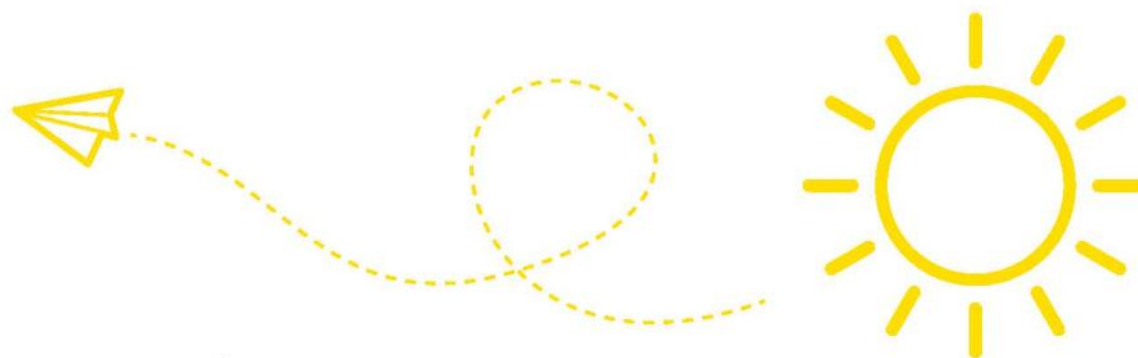
Sunday 10 December, 5.00pm

Celebrating the Christmas Story with music, drama, story and song. Featuring the Church organ, St Peter's Parish Choir, SPW Choirs, and the Musical Nativity "Away in a Manger"



OSHC HOLIDAY PROGRAM

Summer 2017/18



December

THURS 14	Glenelg Playground	Local walk to Moseley Square Playground.	Tier: 1
FRI 15	Cooking up a storm	Cooking and baking experiences.	Tier: 1
MON 18	Zen Garden Making	Make your own Zen garden to take home.	Tier: 1
TUES 19	*Adelaide Oval Excursion	Excursion to Adelaide Oval.	Tier: 3
WED 20	Science Day	Mr Kleinig returns to put on a science show.	Tier: 2
THURS 21	Christmas Around the World	Explore how different countries celebrate the end of year holidays.	Tier: 1
FRI 22	Holiday Movies	Students vote for holiday movies.	Tier: 1

Fees

All activities are assigned to one of the following fee structure tiers.

Tier 1 \$55	Tier 2 \$63	Tier 3 \$71	Tier 4 \$76
-------------	-------------	-------------	-------------

Holiday Program Details

Hours: 7:30am - 6:00pm

Location: SPW Library Seminar Room

*Excursions: Arrive by 9:00am. Returning by 3:30pm

What to bring

• Hat • Appropriate Footwear • 'Healthy choices' lunch (no nut products)
Morning & Afternoon tea will be provided

Book online now at spw.sa.edu.au

Limited spaces available so get in early to ensure your booking.

January

MON 15	Makers Delight	Mr. Bilney and Ms. Kelly to run a 2-day Design Technology workshop onsite.	Tier: 2
TUES 16		Attend one or two days.	
WED 17	*Zoo Excursion	Walk with the animals at the Adelaide Zoo.	Tier: 3
THURS 18	Mini Olympics	Events from all aspects of sport to test ourselves.	Tier: 1
FRI 19	Tacticians	Team based games to test the mind and collaboration skills.	Tier: 1
MON 22	Master Chef Competition	Work against the clock to prepare a surprise meal for our judges.	Tier: 2
TUES 23	*City Excursion	Visit the museum, lunch in the Botanical Gardens and explore the Adel Central Markets.	Tier: 2
WED 24	Robotics	Have fun with our new OSHC Robots.	Tier: 1
THURS 25	Water Day	Slip and slide with our giant bouncy water slide and water games. Bring bathers, a towel and a change of clothes or two.	Tier: 3
FRI 26	Public Holiday	Australia Day Closure	
MON 29	Emergency Services Visit	Come enjoy a surprise!	Tier: 1

